

# CERTIFICATE OF LOCATION OF GOVERNMENT CORNER

NORTHEAST Corner of Section 35, Township 108N, Range 39W

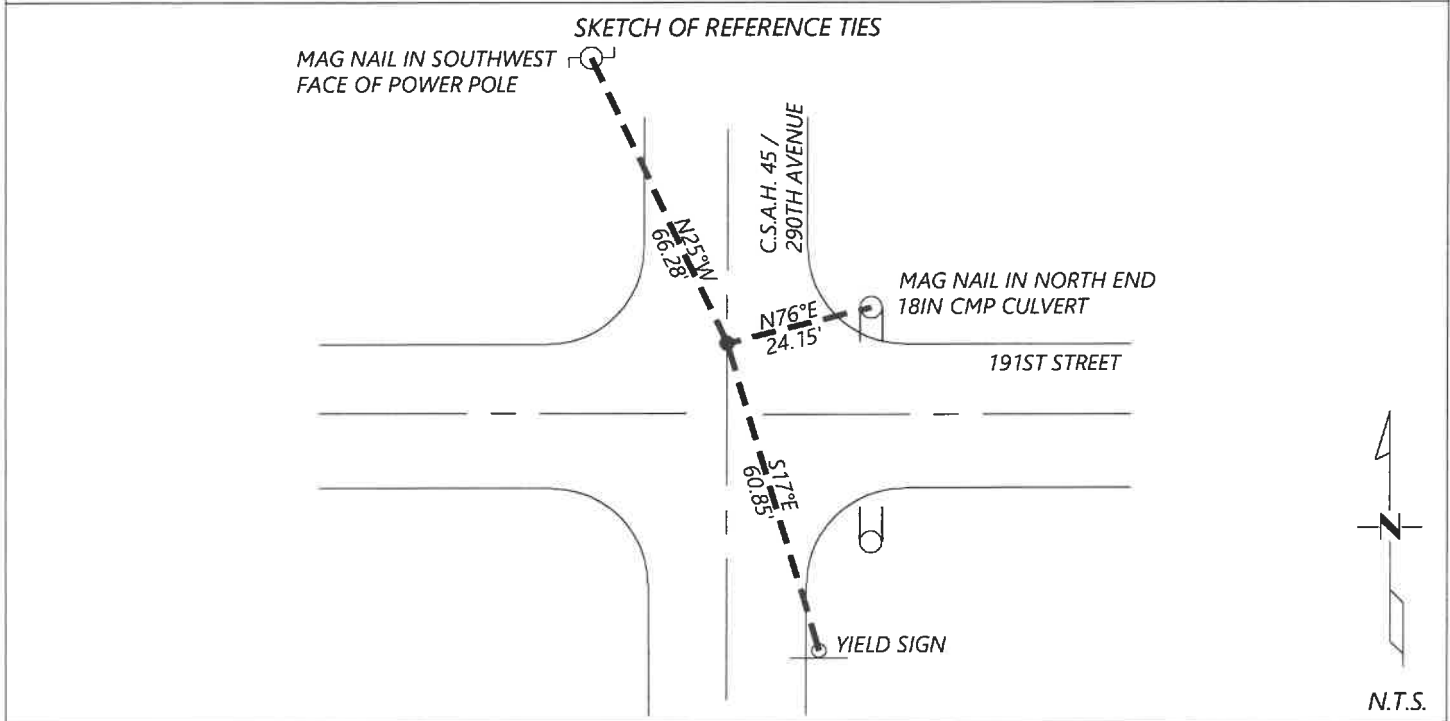
5th Principal Meridian, State of Minnesota, County of MURRAY

At the corner location shown on the sketch:

On \_\_\_\_\_ found a \_\_\_\_\_  
DATE

left monument as found       lowered monument       removed monument (explain)

On 12/16/2020 placed a NO. 4 REBAR WITH CAP "LS 45874" DOWN 0.4FT  
DATE



Statement of evidence for this corner location is on back of this page.

I hereby certify that this document was researched and prepared by me or under my direct supervision and that I am a licensed Land Surveyor under the laws of the State of Minnesota.

Signature [Handwritten Signature]

Date 6/17/2021 License No. 45874

Title:

- Land Surveyor       Professional Engineer
- County Surveyor       County Engineer

OFFICE OF THE COUNTY RECORDER

County of Murray

I hereby certify that this document was filed in the Co.

Recorder's office at \_\_\_\_\_ M. on the \_\_\_\_\_ day of \_\_\_\_\_ A.D. 20 \_\_\_\_\_

County Recorder Karen Bromm by JUN 22 2021, Deputy

DOCUMENT NO. \_\_\_\_\_

**Statement of Evidence:**

Northeast Corner of Section 35, Township 108 North, Range 39 West, 5th Principal Meridian, Murray County, Minnesota.

*No GLO Notes.*

*Undated, Survey record for Section 36 shows the original government corner was found. A distance of 2639.5ft is shown to the North Quarter corner and 2657.0ft is shown to the West Quarter corner.*

1924 *July, Survey record for Section 26 shows the original government corner was found. A distance of 2637.7ft is shown to the South Quarter corner and 2650.7ft is shown to the East Quarter corner.*

2016 *August, Highway Department records show that an iron pin with cap LS 23008 was found at the corner.  
Coordinates: N: 200488.15 E: 571982.12*

2020 *December, Westwood Professional Services excavated with a backhoe and found no evidence of a monument. I set a ½" rebar with cap LS 45874 at the position indicated by the Section 26 and 36 Survey records and measuring from adjacent section corners.*

Analysis of the recovered data, field evidence and survey measurements, indicates that the monument found is the correct perpetuation of this corner. For additional information concerning this corner please contact Westwood Professional Services.